

MIDLAND BASIN DATABASE & FORMATION PROPERTIES CATALOG™

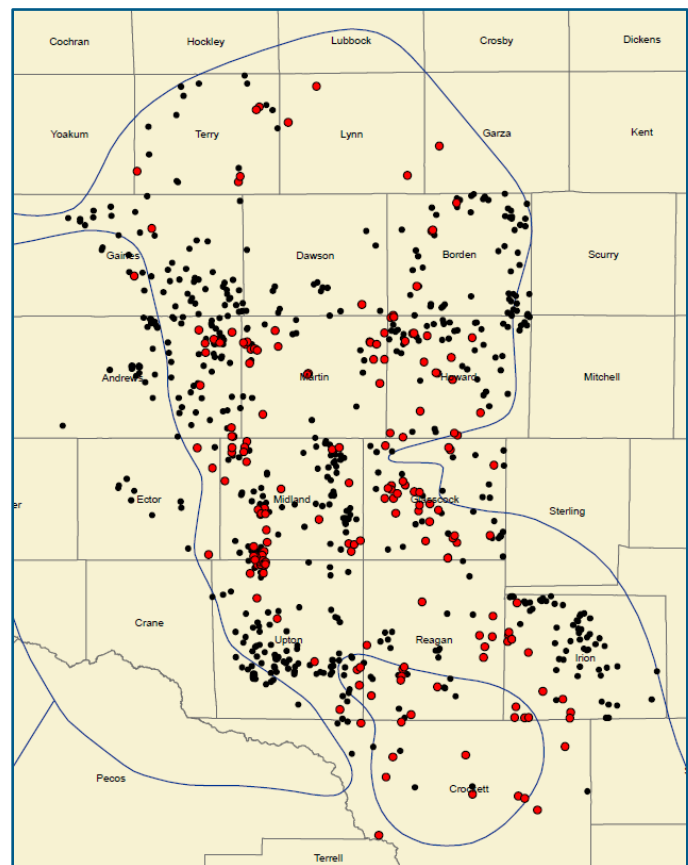
PSi has developed a core-calibrated well log database for the Midland Basin. Dataset includes:

- Fully edited log datasets, QC'd for validity and consistently named – available in LAS file format for quick and easy loading.
- Fully interpreted results data including clay volume, kerogen corrected total porosity, total water saturation, TOC, hydrocarbon index, mineral volumes, mechanical properties (where possible), 5 component facies, and OOIP/640ac/200'.
- Interpretation built around *well log – regional core analysis* relationships in multiple wells across the basin.
- Customized summaries available on various reservoir properties for mapping purposes.
- Spotfire® database (Formation Properties Catalog™) for rapid querying of the data.

Key uses of this database include:

- A ready-to-go consistent petrophysical library for regional scoping and sweet spot identification
- Fills in gaps within internal datasets
- A&D regional resource for play trends
- Eliminates “grunt work” that would otherwise be done by internal staff – freeing up their time for higher level work
- Gives ability to compare production to petrophysical properties and other subsurface attributes.

There are **180** wells included in the database with almost 800 wells showing Hydrocarbon Index.



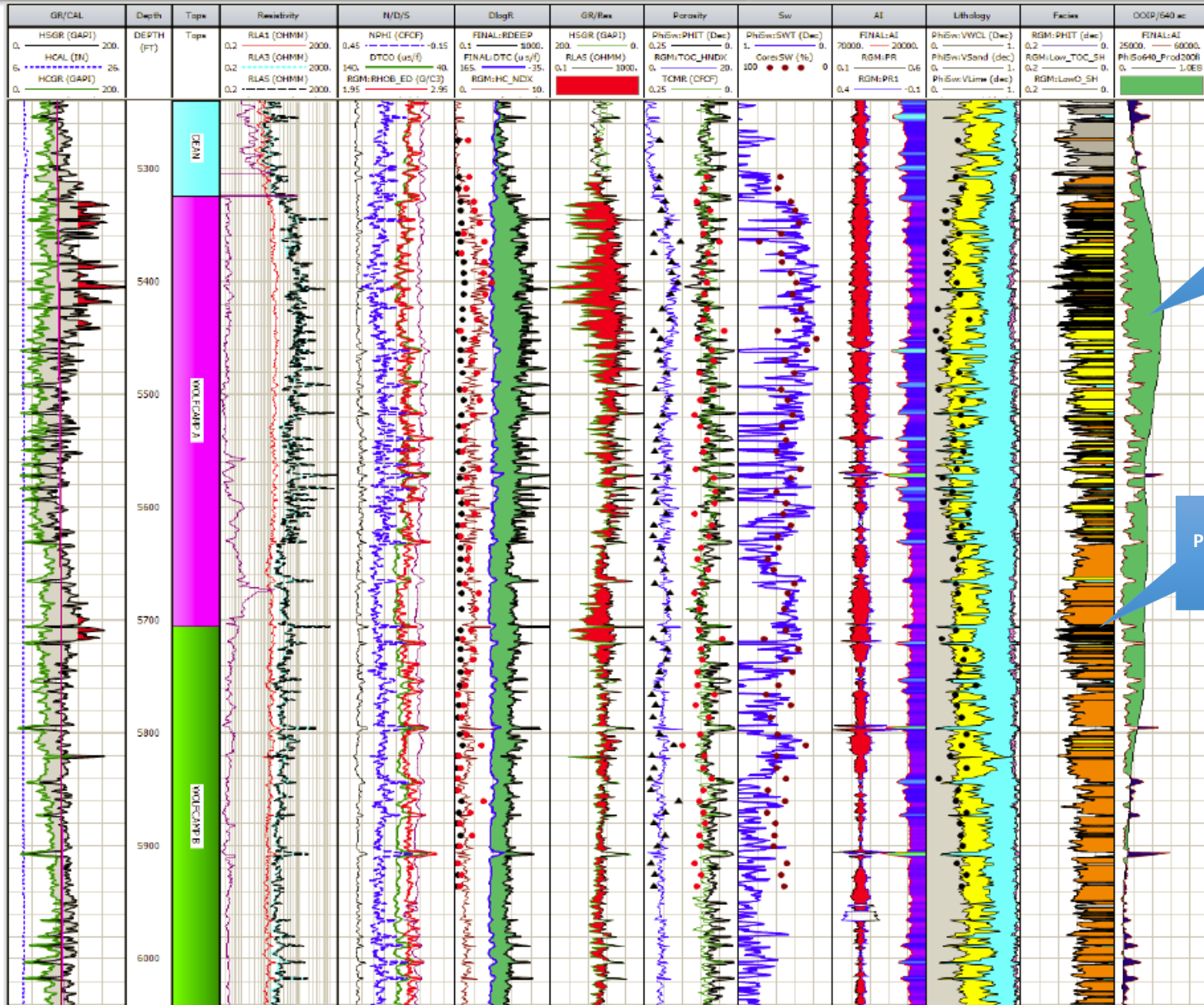
Covers Lower Spraberry to Strawn Horizons



Petrophysical Solutions, Inc.

PETROPHYSICS THAT PAYS OFF™

Example of Detailed Petrophysical Analysis



200' Moving Average HCPV per 640 ac

PSi Proprietary LithoFacies