

DELAWARE BASIN DATABASE & FORMATION PROPERTIES CATALOG™

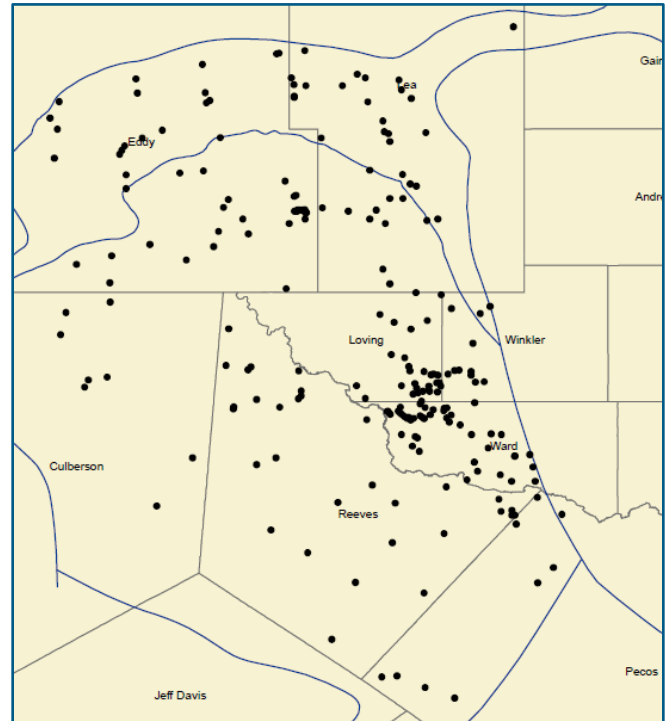
PSi has developed a core-calibrated well log database for the Delaware Basin. Dataset includes:

- Fully edited log datasets, QC'd for validity and consistently named – available in LAS file format for quick and easy loading.
- Fully interpreted results data in the Delaware, Wolfcamp, and Strawn horizons including clay volume, kerogen corrected total porosity, total water saturation, TOC, hydrocarbon index, mineral volumes, mechanical properties (where possible), 5 component facies, and OOIP/640ac/200'.
- Interpretation built around *well log – regional core analysis* relationships.
- Customized summaries available on various reservoir properties for mapping purposes.
- Basic tops included
- Spotfire® database (Formation Properties Catalog™) for rapid querying of the data.

Key uses of this database include:

- Eliminates “grunt work” that would otherwise be done by internal staff – freeing up their time for higher level work
- A ready-to-go consistent petrophysical library for regional scoping and sweet spot identification
- Fills in gaps within internal datasets
- Gives ability to compare production to petrophysical properties and other subsurface attributes
- A&D regional resource assessment for play trends

There are **200** wells included in the database, planning for ~400.



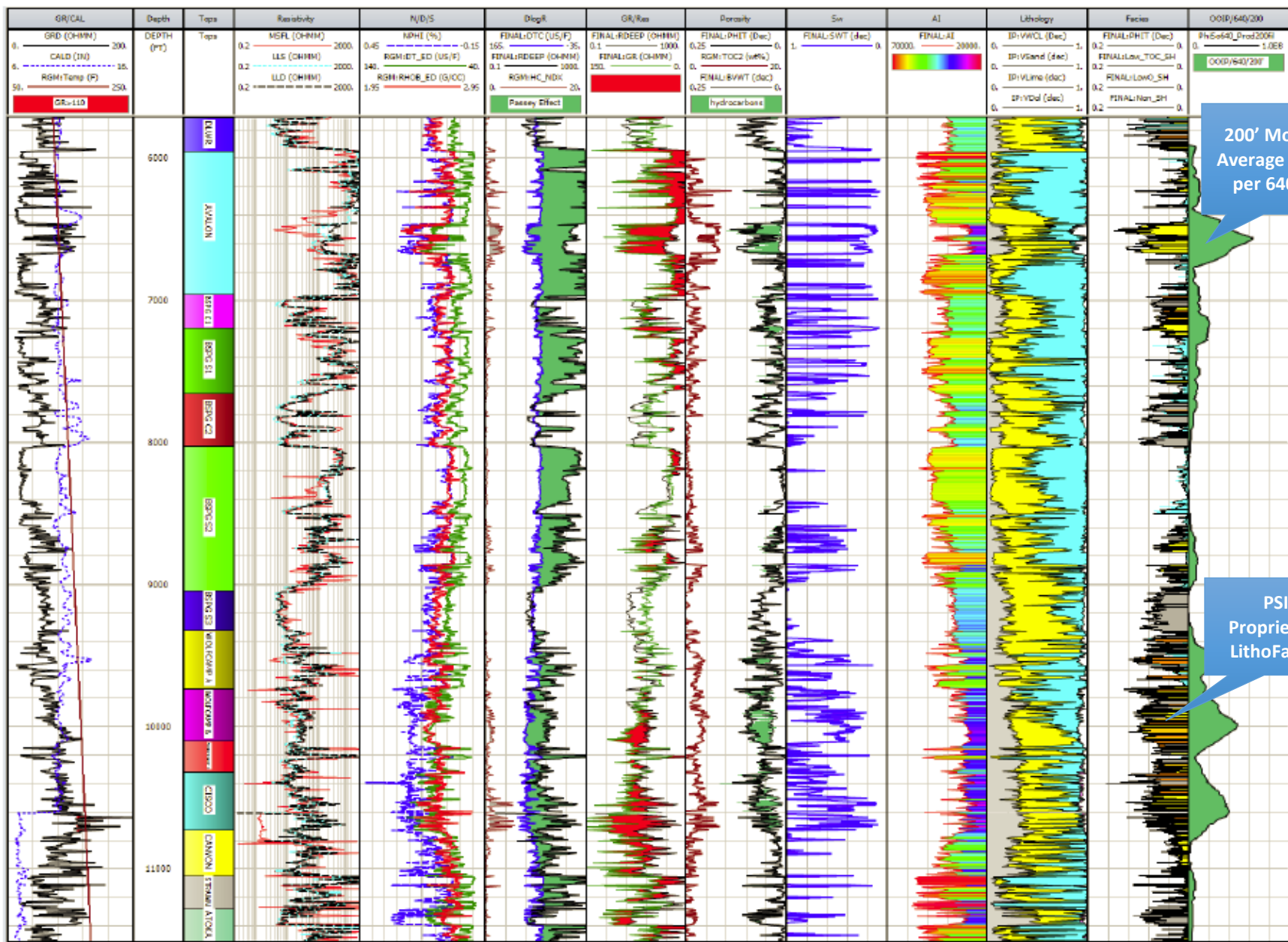
Covers Delaware, Bone Springs, Wolfcamp, and Strawn Horizons



Petrophysical Solutions, Inc.

PETROPHYSICS THAT PAYS OFF™

Example of Detailed Petrophysical Analysis
from the Delaware Basin



200' Moving Average HCPV per 640 ac

PSI Proprietary LithoFacies